

# NANNING TAGRM CO.,LTD

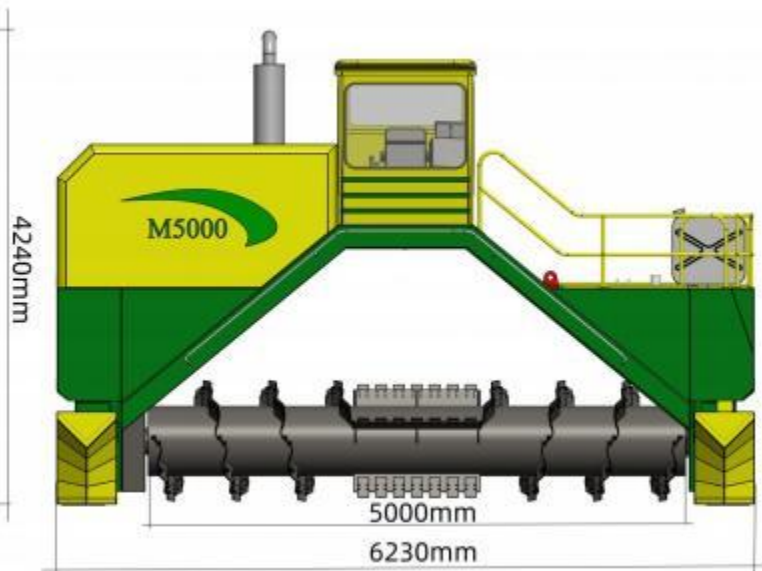
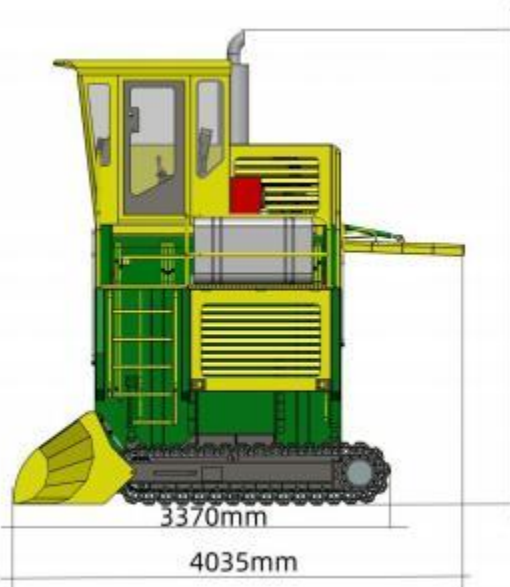
Tel : 86-771-5384871 Fax : 86-771-5384371

Add: NO.399, Wuxiang Avenue, Liangqing District, Nanning, Guangxi, China

E-mail:tagrm138@tagrm.com

Mobile:86-18172082486

## M5000 COMPOST TURNER



# NANNING TAGRM CO.,LTD

Tel : 86-771-5384871 Fax : 86-771-5384371

Add: NO.399, Wuxiang Avenue, Liangqing District, Nanning, Guangxi, China

E-mail:tagrm138@tagrm.com

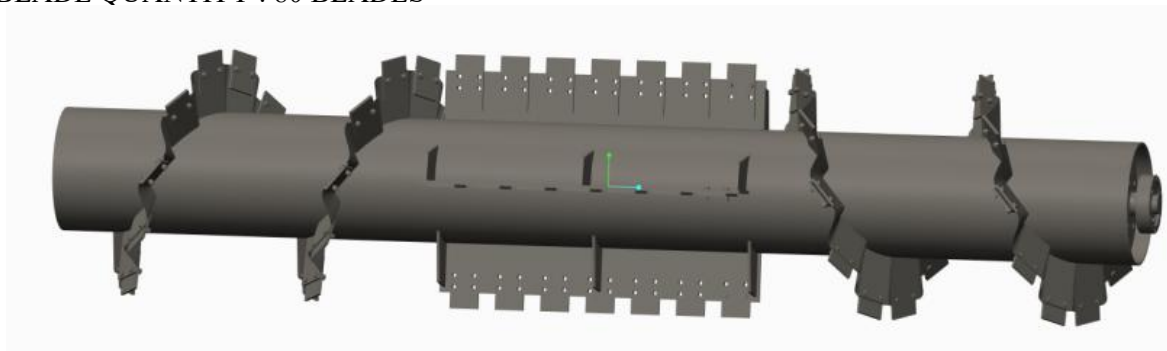
Mobile:86-18172082486

## Specification

Model	M5000		Ground clearance	100mm	H2
Rate Power	240KW(326PS)	WEICHAI	Ground pressure	0.75Kg/cm <sup>2</sup>	
Rate speed	2200 r/min		Working width	5000mm	Max.
Fuel consumption	≤231g/KW ·h		Working height	2200mm	Max.
Battery	24V	2×12V	Pile shape	Triangle	42°
fuel capacity	200L		Forward speed	L: 0-8m/min H: 0-21m/min	
Crawler tread	5685mm	W2	Rear speed	L: 0-8m/min H:0-21m/min	
Crawler size	400mm	Steel with shoe	Feed port width	4900	W1
Oversize	6230×4035×4240mm		Turning radius	3200mm	mini
Weight	10000kg	Without fuel	Drive mode	Hydraulic control	
Diameter of roller	1080mm	With knife	Working capacity	2500m <sup>3</sup> /h	

SPECIAL ROLLER FOR GARBAGE COMPOST

BLADE QUANTITY : 80 BLADES



Payment terms: T/T 30% advanced, 70% before loading ship

Delivery lead time: 30days

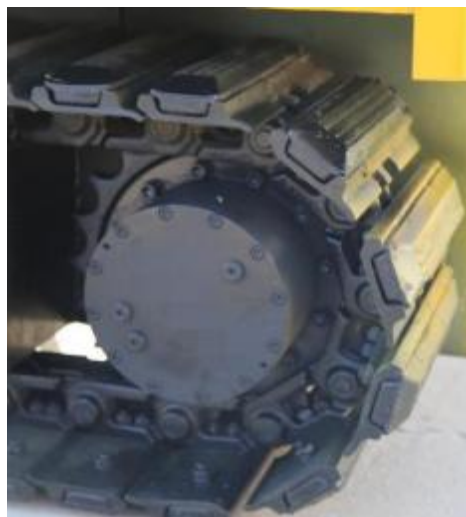
Load: 1 set/ 40 HQ Container

Packing: Nude

Note: Cost of installation and technical support/ training extra.

Products' picture and data just for reference, it will some different after developed.

Crawler type: steel with rubber shoe



# NANNING TAGRM CO.,LTD

Tel : 86-771-5384871 Fax : 86-771-5384371

Add: NO.399, Wuxiang Avenue, Liangqing District, Nanning, Guangxi, China

E-mail:tagrm138@tagrm.com

Mobile:86-18172082486

## ENGINE( WEICHAI)

Brand	WEICHAI	Peak Torque/ Speed	1550/ 1200- 1500N.m/rpm
Model	WP10	Cold Style	Water- cooled
Displacement	9.726L	Emission Standard	China stage IIA
Cylinder Diameter	126mm	Cylinder No.	6
Piston Stroke	130mm	Electronic Control System	ECM
Rated Speed	1500r/min	Fuel	Diesel
Rated Power	246kW	Weight	875KG
Fuel Consumption	231g/Kw.h	Working temp	-30~50C



# NANNING TAGRM CO.,LTD

Tel : 86-771-5384871 Fax : 86-771-5384371

Add: NO.399, Wuxiang Avenue, Liangqing District, Nanning, Guangxi, China

E-mail:sale@tagrm.com

Mobile:86-13822531567

## FREE SPARE PART LIST

No.	Item	Qty	Note
1	Mix blade	30pcs	WITH NUT left 15/right15
2	Hydraulic oil pipe	1set	
3	Hydraulic system seals	1set	O/combination seal ring
4	Hydraulic system filter	1set	Outlet and inlet
5	Electrical wear parts	1set	Switch/solenoid valve/fuse
6	Reserve cable	1set	M6/8/ 10/ 12/ 16
7	Accessory bolts	1set	
8	Track tension valve	2pcs	
9	Engine kit	1set	
10	Engine filter element	1set	Diesel/engine oil/ air
11	Special tools	1set	

## SUGGEST CHARGE SPARE PART

No.	Name	Unit	Qty	Amount USD	Size
1	Branch driver clutch	SET	1	860.00	HCL300-01
2	Main driving axle	SET	1	280.00	MATE
3	Branch driver pump	SET	1	60 00	HCL300-2
4	Drive box bearing	SET	1	210.00	NF3 14/315/318
5	Main shaft vice bearing	SET	1	85.00	2318
6	Lift cylinder	SET	1	230.00	
7	Oil pump coupling	SET	1	35.00	
8	Spare section of track	PCS	10	330 00	
9	Rubber shoe of track	SET	1	921.00	
10	Mix blade	PCS	120	260.00	
	TOTAL			3271.00	

# NANNING TAGRM CO.,LTD

Tel : 86-771-5384871 Fax : 86-771-5384371

Add: NO.399, Wuxiang Avenue, Liangqing District, Nanning, Guangxi, China

E-mail:sale@tagrm.com

Mobile:86-13822531567

---

## TRANSMISSION DIAGRAM OF WORKING PARTS

